

TIMKEN



TIMKEN QUALITY. DRIVING CONFIDENCE.

WHEEL HUB UNITS FOR LIGHT AND MEDIUM-DUTY VEHICLES

The line between Timken® quality wheel hub units and economy units is distinct – and it's more than just dollars and cents – **it's confidence.**

QUALITY = CONFIDENCE: TIMKEN® QUALITY WHEEL HUB UNITS

Although economy wheel hub units may save money up front, they can cause repair shops to suffer long-term costs – comebacks, unsatisfied customers, increased liability and lost business – **negatively affecting their bottom lines and reputations.**

At Timken, we believe that quality wheel hub units for light and medium-duty vehicles **must deliver more.** With our application and engineering expertise, comprehensive service and support, and a strong reputation for quality, we design Timken premium wheel hub units to **improve the efficiency, safety and reliability** of automotive applications. Recommend Timken quality and expertise to help build your customers' confidence in you and grow your business.

SMOOTHER RIDE

Low runout reduces noise and vibration, **improving braking performance.**

LONGER BEARING LIFE

Premium seals feature a reinforced outer case, ribbed rubber inner diameter, an internal contamination exclusion system and vent holes to help **prevent installation damage, promote positive sealing and enhance seal life and durability.**

IMPROVED FUEL EFFICIENCY

Well-engineered premium bearings have precision profiles, uniform internal geometry and enhanced surface finishes to **increase load-carrying capacity, extend bearing life and improve fuel efficiency.**

ENHANCED SAFETY

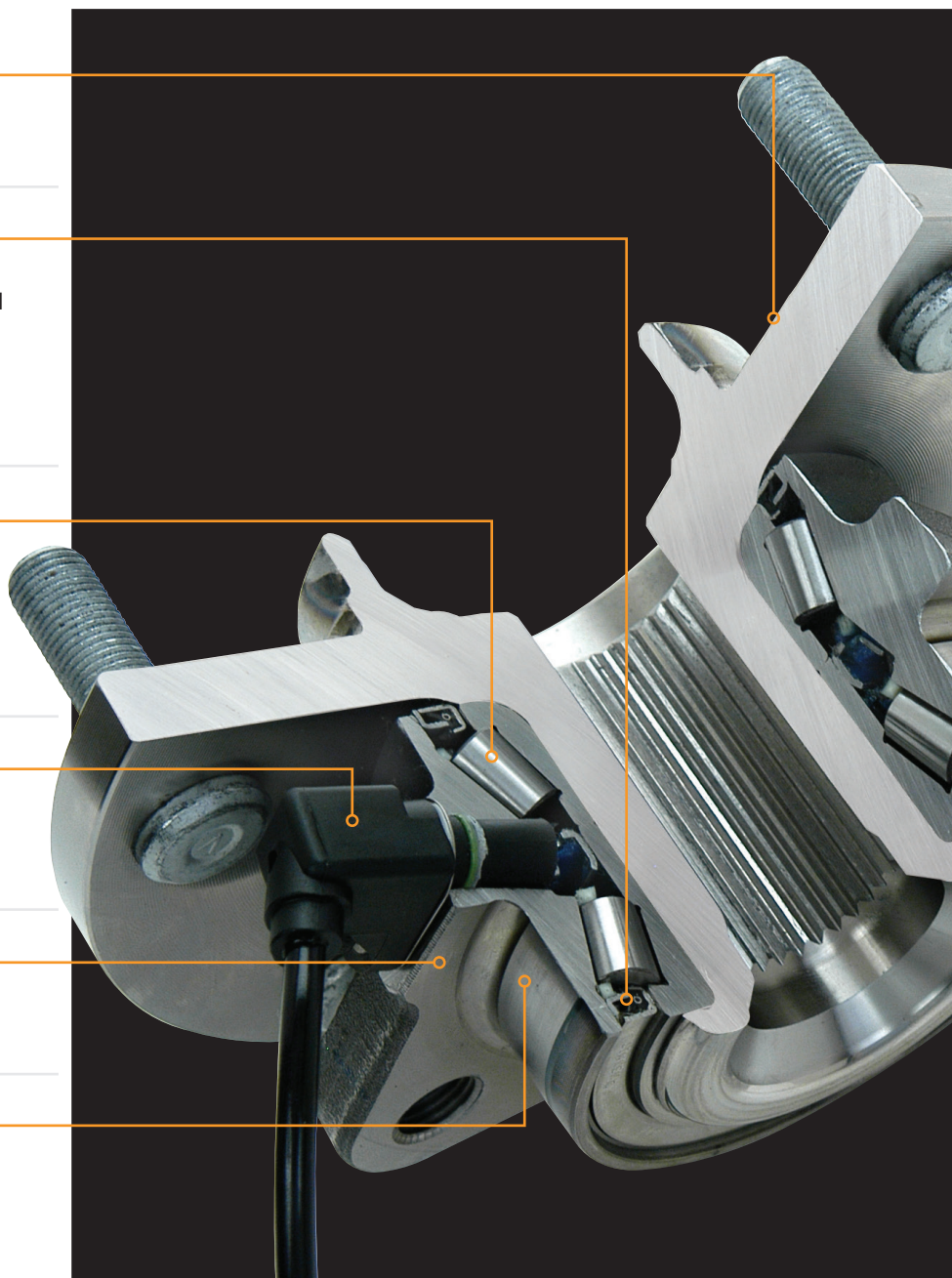
Advanced Sensor Technology monitors wheel speed for Anti-lock Braking Systems (ABS). **Sensors are thoroughly tested.**

STRONGER PERFORMANCE

Custom-designed alloy steel promotes **longer hub life.**

SIMPLIFIED INSTALLATION

Precision fits between raceway and hub barrel control internal bearing clearances to help **maintain proper bearing setting.**



Technicians prefer the **Timken brand** almost

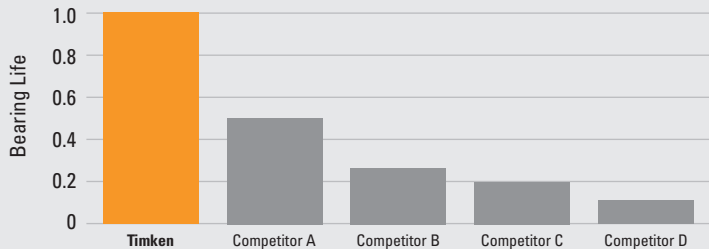
3:1 

over any other bearing brand.

Results based on a survey conducted in 2011 by an independent research firm of professional technicians at independent repair shops in the U.S.

2x Timken® Wheel Hub Units **Last Twice as Long** as Economy-Line Competitors'

Timken recently benchmarked our manufactured wheel hub units against competitive economy-line products. The bearings were for the same vehicle application and were evaluated using the same test conditions.



Information derived from Timken Standard Hub/Bearing Accelerated Durability Rig Test. Testing methods accepted by original equipment manufacturers. (SP450300, 513200). *Weibull life based on statistically small sample size.

#1 REASON

technicians choose premium wheel hub units - **no comebacks**

Installing economy wheel hub units can lead to comebacks – costing technicians hundreds of dollars per year in lost labor, lost opportunities for new business, replacement units and loss of customer confidence.



Economy wheel hub units can waste time and money, but even worse, can jeopardize driver and passenger safety.

ROUGH RIDE: Excessive runout results in brake noise, pulsation and reduced brake life.

PREMATURE BEARING AND SEAL WEAR:

Economy seals can allow lubricant contamination, reducing bearing and seal life.

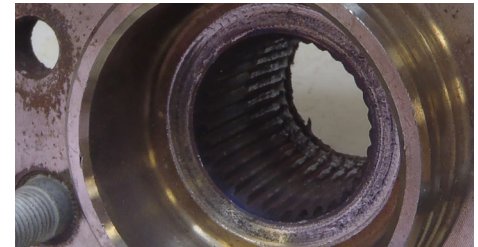


REDUCED BEARING LIFE: Poor surface finishes and profiles can inhibit lubrication flow and distribute loads unevenly, leading to bearing damage or failure.

UNSAFE CONDITIONS: Faulty sensors result in decreased ABS performance, unsafe conditions and comebacks.

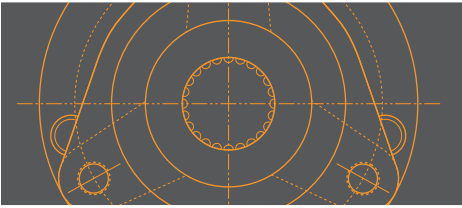


EXCESSIVE WEAR: Lower quality materials lead to cracks, raceway damage and potentially unsafe conditions.



POOR PERFORMANCE: Bearing cone can turn on the hub barrel, which changes the bearing setting – promoting vibration, excessive noise and premature wear.

EXPERTISE = CONFIDENCE



Expert Engineering and Application Knowledge
Customer Service



Onsite Training for Technicians
Tech Series Pro Online Training (timken.com/techseriespro)
TechTips Knowledge and Training (timken.com/aftermarket)
YouTube Video Training (youtube.com/TheTimkenCompany)

Application	Heavy Duty Vehicles	Cross Reference	Part Search	Knowledge Center	Info Request
Year:	2012	Make:	FORD	Model:	F-150
Torque Specifications **					
Location	Part Number	Part Type	QR		
FRONT	SP550219	Wheel Bearing and Hub Assembly			
FRONT	SP550219	Wheel Bearing and Hub Assembly			
FRONT	SP550219	Wheel Bearing and Hub Assembly			
FRONT	SP550219	Wheel Bearing and Hub Assembly			
FRONT	SP550219	Wheel Bearing and Hub Assembly			
FRONT	SP550219	Wheel Bearing and Hub Assembly			
FRONT	SP550219	Wheel Bearing and Hub Assembly			
FRONT	SP550220	Wheel Bearing and Hub Assembly			
FRONT	SP550220	Wheel Bearing and Hub Assembly			
FRONT	SP550220	Wheel Bearing and Hub Assembly			

Timken.com
Timkeninfo.com 24/7 Resource for Timken Part Information
Demand Insight. The Right Part in the Right Place at the Right Time
(www.timkenstore.com)

(866) 9-TIMKEN (984-6536)

Contact a Timken sales representative today to discover how we can help drive your confidence and your customers'.

TIMKEN

The Timken team applies their know-how to improve the reliability and performance of machinery in diverse markets worldwide. The company designs, makes and markets bearings, gear drives, automated lubrication systems, belts, brakes, clutches, chain, couplings, linear motion products and related industrial motion rebuild and repair services.

Stronger. By Design.

www.timken.com/aftermarket