

TIMKEN

COMMERCIAL VEHICLE WHEEL END ACCESSORIES

Engineered to Increase the Reliability and Efficiency of Your Operation



HUB CAPS

- Durable and cost-effective
- OEM approved with a precise fit and long, low maintenance service life

DIE-CAST ALUMINUM

- Oil bath types may include a side fill plug
- Machine-applied window for a secure seal and easy oil level checks
- Vented fill plugs maintain low internal pressure caused by normal heat build up
- Hubodometer versions available for most applications

STAMPED STEEL

- Oil bath and grease types available
- Powder-coat painted finish (available with duplex nickel-plated and chrome-plated finish)
- Machine-applied window remains clear and shatter proof
- All units are corrosion-resistant

P-AXLE

- Threaded units available in die-cast aluminum or full plastic (oil bath and grease types), or a hubodometer version
- Standard or chrome finish, with or without side fill or vented plug

PSI

- Replacement hub caps for PSI-equipped wheel ends



HUBCAPS

TIMKEN P/N	TRISEAL	STEMCO	SKF	NATIONAL	DUAL DYNAMICS
FOR OIL					
80009	80009	340-4009		340-009	
80075	80075	340-4975	1282	340-975	
81002	81002	343-4002	1627		
81009	81009	343-4009	1643	343-009	203-P
81024	81024	343-4024	1612	343-024	302-P
81909	81909	343-4009	1643	343-009	203-P
81195	81195	343-4195	1696	343-009	257-P

FOR GREASE					
82009	82009	342-4009	1343	342-009	202-G

FOR HUBODOMETER					
83009	83009	347-4009	1600	347-009	253-H
83013	83013	347-4013		347-013	281-H
83075	83075	347-4075			277-H

STAMPED STEEL					
87009	87009	340-5096	1753	HU-009-A	Grease
87024	87024	340-0044	1711	HU-024-A	Grease
88009	88009	340-5097			Grease
86009	86009		1743	HW-009-A	Oil

HUBCAP ACCESSORIES

TIMKEN P/N	TRISEAL	STEMCO	SKF	NATIONAL	DESCRIPTION
61009R	61009	330-3009	450751	GKT009	6 Hole Gasket 5.5" BC
61067R	61067	330-3067	450788	733067	Universal Gasket 5.5" BC
61067B	61067B	330-3067	450788	733067	Universal 5.5" Bulk Pack
64999R	64999	359-5990	450434	B299	Orange Universal Plug
64999B	64999B	359-5990	450434	B299BK	Orange Plug, Bulk Pack
74009	74009	359-5995			3.5" Dia. Window Replacement
74009H	74009H	359-6117			3.5" Dia. Hubo Window

HUBODOMETERS

- Helps simplify record keeping, reduce inventory and improve scheduling of regular maintenance and safety checks (follow OEM recommendations for mileage between service intervals)
- Extremely durable: UV protected polycarbonate material is hermetically sealed for a moisture-proof, tamper-proof, air-tight seal and the Zinc protected housing is corrosion-resistant
- Available in miles or kilometers (pre-set units available upon request)
- Available in a full range of ratios that meet the latest tire manufacturer's specifications
- Accurately records revolutions in both directions (either side of the vehicle) – even on tough road conditions
- Individually serial numbered for easy tracking
- Easy installation – no wiring, power or complicated programming required; mounts with a standard ½"-20 mounting stud
- Supported by a full line of mounting brackets and hubcaps
- Operating temperature range: -40°F to 180°F (-40°C to 85°C); Product mass: 1.35 lbs. (600 grams)

ELECTRIC

- One model fits any tire application
- Programmable in miles or kilometers with ability to preset mileage (programming tool and easy-to-follow instructions included)
- Secure lockout feature with ability to permanently disable changes to the unit's set-up
- Separate trip and lifetime totals
- Eliminates expensive calibration machines, readers and complexity

ANALOG

- Durable construction: die-cast zinc case, oil impregnated bronze bearings, hardened steel shaft
- Fully mechanical with Acetal resin gear, pinions and wheel
- Unique counter balance design eliminates orbiting and provides precision accuracy
- No calibration, tampering or batteries



Mounting brackets available for all makes and models.

DIAL INDICATORS

DIAL INDICATOR TOOL PART NUMBERS

Analog: BADG1

Digital: BADG2



DIGITAL HUBODOMETER

TIMKEN P/N	TRISEAL	VEEDER-ROOT	STEMCO
47001	47000	RT1000-000	600-5499

ANALOG HUBODOMETERS (MILES)

TIMKEN P/N	TRISEAL	VEEDER-ROOT	STEMCO
46450M	46450	777717-450	650-0581
46475M	46475	777717-475	650-0587
46490M	46490	777717-490	650-0598
46484M	46484	777717-484	650-0593
46520M	46520	777717-520	650-0610

ANALOG HUBODOMETERS (KILOS)

TIMKEN P/N	TRISEAL	VEEDER-ROOT	STEMCO
46294K	46294	777727-294	650-0526
46308K	46308	777727-311	650-0537
46311K	46311	777727-311	650-0539
46316K	46316	777727-316	650-0541
46326K	46326	777727-326	650-0545

images not shown to scale

TIMKEN SET-RIGHT® SPINDLE NUTS

- Reduces installation, maintenance and inventory carrying costs
- Fast and accurate method of securing and adjusting wheel end components (within the recommended setting range)
- Helps extend seal and bearing life and reduce tire wear
- Easy installation with a 6-point or 8-point socket and torque wrench
- Available for trailer, drive and steer axles for standard or "D" flat slotted spindles

HOT DOTS

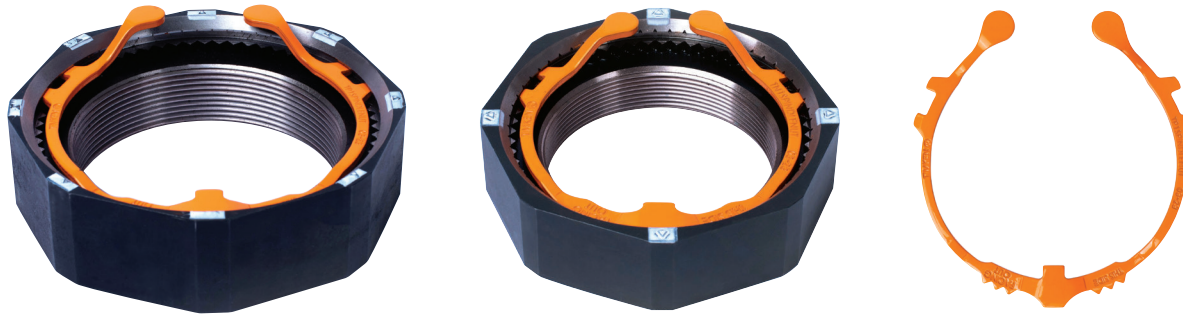
- Easy visual indicator – changes from white to black when wheel end temperature exceeds 250°F (121°C) – accurate to within +/-1°
- Simplifies pre-trip wheel end inspection and verification; helps reduce unexpected repairs
- Strong adhesion even in wet conditions -40°F to 300°F (-40°C to 148°C)

TIMKEN SET-RIGHT® SPINDLE NUTS

TIMKEN SPINDLE NUT P/N	STEMCO Pro-Torq®	Axilok®	DESCRIPTION	SOCKET SIZE	TIMKEN REPLACEMENT KEEPER P/N
FFT1SPINDLE Nut	448-4837	AX18-1500	1.500" - 18 TPI	2-1/2" - 6 Point	FFT1KEEPER
FFD1SPINDLE Nut	448-4836	AX12-1500	1.500" - 12 TPI	2-1/2" - 6 Point	FFD1KEEPER
RD1SPINDLE Nut	449-4973	AX12-3250	3.250" - 12 TPI	4-3/8" - 8 Point	RD1KEEPER
TN1SPINDLE Nut	447-4743	AX16-2625	2.625" - 16 TPI	3-3/4" - 8 Point	TN1KEEPER
TP1SPINDLE Nut	447-4723	AX12-3480	3.480" - 12 TPI	4-13/16" - 8 Point	TP1KEEPER

HOT DOTS (10 Hot Dots per pack)

TIMKEN P/N	DESCRIPTION
43250	Hot Dots - 1 Pack
43250R	Hot Dots - 10 Pack
43250B	Hot Dots - 100 Pack



images not shown to scale

TIMKEN

The Timken team applies their know-how to improve the reliability and performance of machinery in diverse markets worldwide. The company designs, makes and markets bearings, gear drives, automated lubrication systems, belts, brakes, clutches, chain, couplings, linear motion products and related industrial motion rebuild and repair services.

Stronger. By Design.

www.timken.com/aftermarket