

TIMKEN

TOUGHER APPLICATIONS. BETTER SOLUTIONS.

**TIMKEN® TAKE-UP FRAMES NOW AVAILABLE IN
FOUR MOUNTING STYLES FOR YOUR STANDARD AND
UNIQUE APPLICATIONS**

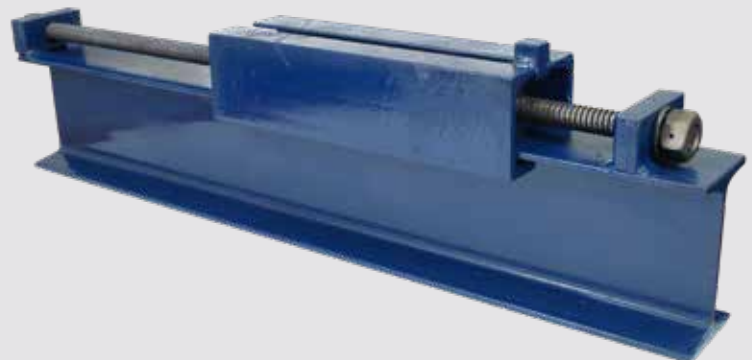
Introducing the ultimate solution to revolutionize your aggregate and mining operation. Engineered with precision, these frames are reliable and efficient, and help to reduce downtime and costly maintenance. Timken Take-Up Frames are built to withstand the harshest conditions, for more seamless and uninterrupted material handling.

Our frames are crafted using heavy-duty steel, protecting your bearing and adjustment rod, for optimal performance. Whether you're handling sand, gravel, or heavy-duty mining materials, our Take-Up Frames provide the perfect balance of strength and flexibility for smooth conveyor operations.

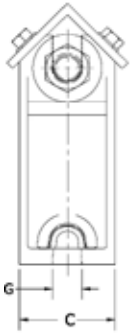


HEAVY-DUTY PERFORMANCE

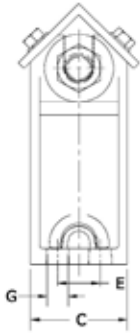
- Take-up frames available in top-angle, pedestal, wide-slot and heavy-duty configurations
- Top-angle and wide-slot accept bearings with shaft sizes from 1 3/4 to 4 in. (45mm - 100mm)
- Pedestal accepts bearings with shaft sizes from 1 7/8 to 4 7/8 (37mm - 113mm)
- Travel lengths of 12, 18, 24 and 36 inch options
- Take-Up Frames sold separate from bearings; appropriate bearings found in the Timken mounted solid block spherical roller bearing Catalog (No. 10785) or the Timken Type E mounted bearing Catalog (No. 10591)



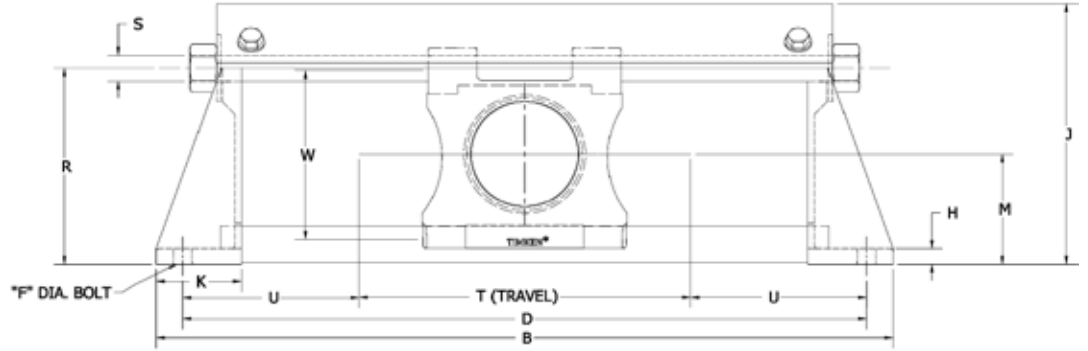
TOP-ANGLE TAKE-UP FRAMES - QMTPF



2-BOLT FRAME

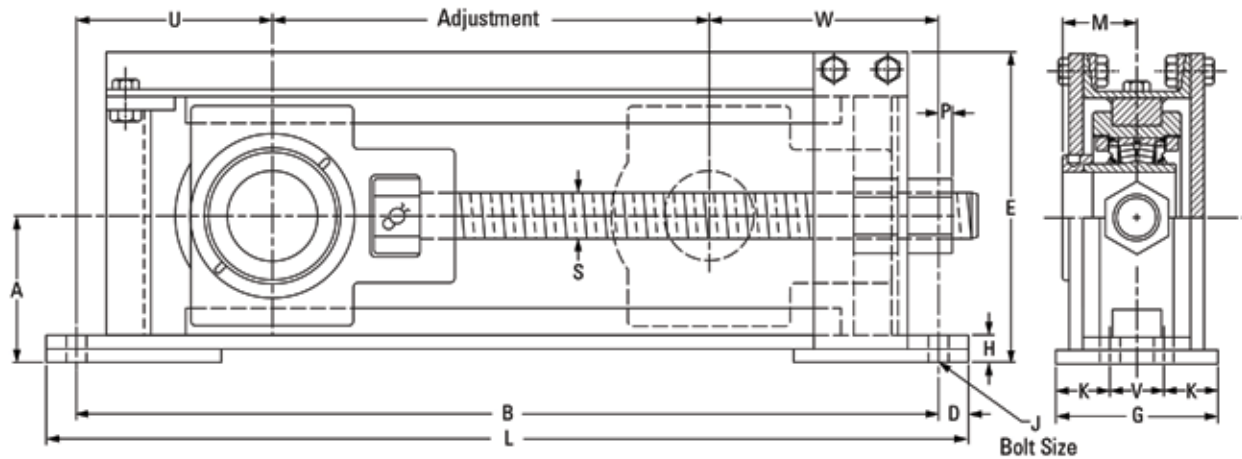


4-BOLT FRAME



Bearing Part No.	Type-E Shaft Size	SRB Shaft Size	Nominal T	B	C	D	F	E	G	H	J	K	M	R	S	T	U	W	Wt.
			mm in.	mm in.	mm in.	mm in.	mm in.	mm in.	mm in.	mm in.	mm in.	mm in.	mm in.	mm in.	mm in.	mm in.	mm in.	mm in.	Kg lbs
QMTPF12-115	1 3/8 1 7/8 1 15/16 2 45mm 50mm	1 11/16 2 50mm	304.8 12	723.9 28.50	88.9 3.50	673.1 26.50	M16 5/8	-	25.4 1.00	19.0 0.75	215.9 8.50	76.2 3.00	100.0 3.94	161.1 6.34	3/4-10 UNC	368.3 14.50	152.4 6.00	131.0 5.16	14.52 32
QMTPF18-115			457.2 48	876.3 34.50		825.5 32.50										520.7 20.50			16.32 36
QMTPF24-115			609.6 24	1028.7 40.50		977.9 38.50										673.1 26.50			18.59 41
QMTPF12-203E	2 3/16 50mm	-	304.8 12	749.3 29.50	88.9 3.50	698.5 27.50	M16 5/8	-	25.4 1.00	19.1 0.75	231.8 9.13	76.2 3.00	106.4 4.19	177.0 6.97	3/4-10 UNC	381 15.00	158.8 6.25	146.8 5.78	15.42 34
QMTPF18-203E			457.2 48	901.7 35.50		850.9 33.50										533.4 21.00			17.69 39
QMTPF24-203E			609.6 24	1054.1 41.50		1003.3 39.50										685.8 27.00			19.5 43
QMTPF12-203/207E	2 1/4 2 7/16 2 1/2 60mm 65mm	2 3/16 2 1/4 55mm	304.8 12	774.7 30.50	101.6 4.00	723.9 28.50	M20 3/4	-	33.3 1.31	19.1 0.75	257.2 10.13	88.9 3.50	111.1 4.38	187.3 7.38	1-8 UNC	368.3 14.50	177.8 7.00	157.2 6.19	21.32 47
QMTPF18-203/207E			457.2 48	927.1 36.50		876.3 34.50										520.7 20.50			24.49 54
QMTPF24-203/207E			609.6 24	1079.5 42.50		1028.7 40.50										673.1 26.50			27.21 60
QMTPF12-207/215	2 11/16 2 3/4 2 15/16 3 70mm 75mm	2 7/16 2 1/2 2 11/16 2 15/16 3 60mm 65mm 70mm 75mm	304.8 12	825.5 32.50	114.3 4.50	774.7 30.50	M16 5/8	50.8 2	25.4 1.00	19.1 0.75	281 11.06	88.9 3.50	125.4 4.94	212.7 8.38	1-8 UNC	393.7 15.50	190.5 7.50	182.6 7.19	23.6 52
QMTPF18-207/215			457.2 48	977.9 38.50		927.1 36.50										546.1 21.50			27.2 60
QMTPF24-207/215			609.6 24	1130.3 44.50		1079.5 42.50										698.5 27.50			29.9 66
QMTPF12-307	3 3/16 3 1/4 3 7/16 3 1/2 80mm 85mm 90mm	3 3/16 3 1/4 3 7/16 3 1/2 80mm 85mm 90mm	304.8 12	876.3 34.50	114.3 4.50	812.8 32.00	M20 3/4	50.8 2	25.4 1.00	19.1 0.75	317.5 12.50	101.6 4.00	138.1 5.44	239.0 9.41	1 1/4-7 UNC	381 15.00	215.9 8.50	208.8 8.22	28.6 63
QMTPF18-307			457.2 48	1028.7 40.50		965.2 68.00										533.4 21.00			31.7 70
QMTPF24-307			609.6 24	1181.1 46.50		1117.6 44.00										685.8 27.00			35.8 79
QMTPF12-315	3 15/16 4 100mm	3 11/16 3 3/4 3 15/16 4 100mm	304.8 12	977.9 38.50	139.7 5.50	914.4 36.00	M20 3/4	63.5 2.5	25.4 1.00	19.1 0.75	362 14.25	114.3 4.50	177.8 7.00	288.0 11.34	1 1/4-7 UNC	419.1 16.50	244.5 9.63	226.2 8.91	38.1 84
QMTPF18-315			457.2 48	1130 44.50		1066.8 42.00										571.5 22.50			41.7 92
QMTPF24-315			609.6 24	1282.7 50.50		1219.2 48.00										723.9 28.50			46.3 102

CENTER-PULL WIDE SLOT TAKE-UP FRAMES - QMTF



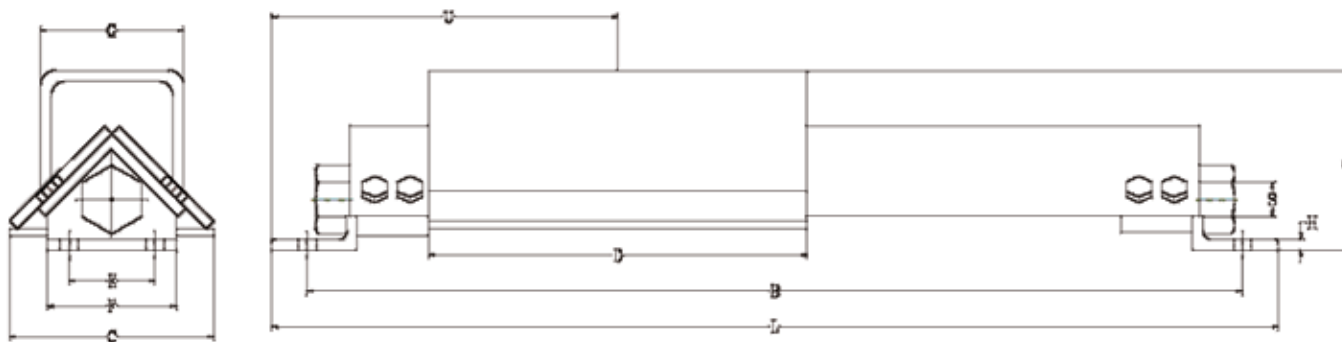
Frame Part No.	Travel Nom.	Travel Adj.	A	B	D	E	G	H	J	K	L	M	P	S	U	V	W	No. of Bolts Req.	Wt.
			mm in.	mm in.	mm in.	mm in.	mm in.	mm in.	mm in.	mm in.	mm in.	mm in.	mm in.	mm in.	mm in.	mm in.	mm in.		mm in.
QMTF12-115	12	419.1 16.50	100.1 3.94	698.5 27.50	25.4 1.00	210.3 8.28	101.6 4.00	31.8 1.25	16 %	-	749.3 29.50	47.8 1.88	31.8 1.25	1-5 ACME	136.7 5.38	-	143.0 5.63	2	27.2 60
QMTF12-203	12	431.8 17.00	106.4 4.19	698.5 27.50	25.4 1.00	220.0 8.66	101.6 4.00	35.1 1.38	16 %	-	749.3 29.50	50.8 2.00	41.4 1.63	1.125-5 ACME	115.8 4.56	-	150.9 5.94	2	29.5 65
QMTF12-207	12	421.6 16.60	111.3 4.38	723.9 28.50	25.4 1.00	233.4 9.19	101.6 4.00	28.7 1.13	20 %	-	774.7 30.50	54.1 2.13	44.5 1.75	1.25-5 ACME	134.9 5.31	-	166.6 6.56	2	32.2 71
QMTF12-215	12	393.7 15.50	129.3 5.09	774.7 30.50	25.4 1.00	272.8 10.74	127.0 5.00	28.7 1.13	16 %	38.1 1.50	825.5 32.50	60.5 2.38	12.7 0.50	1.5-4 ACME	165.1 6.50	50.8 2.00	215.9 8.50	4	49.4 109
QMTF12-307	12	393.7 15.50	143.0 5.63	812.8 32.00	28.7 1.13	295.4 11.63	127.0 5.00	26.2 1.03	20 %	38.1 1.50	870.0 34.25	65.5 2.58	25.4 1.00	1.75-4 ACME	185.7 7.31	50.8 2.00	233.4 9.19	4	62.6 138
QMTF12-315	12	457.2 18.00	177.8 7.00	914.4 36.00	31.8 1.25	367.5 14.47	152.4 6.00	36.6 1.44	20 %	44.5 1.75	977.9 38.50	75.2 2.96	41.4 1.63	2-4 ACME	190.5 7.50	63.5 2.50	265.2 10.44	4	86.6 191
QMTF18-207	18	574.0 22.60	111.3 4.38	876.3 34.50	25.4 1.00	234.2 9.22	101.6 4.00	26.9 1.06	20 %	-	927.1 36.50	54.1 2.13	44.5 1.75	1.25-5 ACME	139.7 5.50	-	162.6 6.40	2	36.7 81
QMTF18-215	18	546.1 21.50	129.3 5.09	927.1 36.50	25.4 1.00	272.8 10.74	127.0 5.00	28.7 1.13	16 %	38.1 1.50	977.9 38.50	60.5 2.38	12.7 0.50	1.5-4 ACME	165.1 6.50	50.8 2.00	215.9 8.50	4	54.4 120
QMTF18-307	18	546.1 21.50	143.0 5.63	965.2 38.00	28.7 1.13	295.4 11.63	127.0 5.00	26.2 1.03	20 %	38.1 1.50	1022.4 40.25	65.5 2.58	25.4 1.00	1.75-4 ACME	185.7 7.31	50.8 2.00	233.4 9.19	4	70.8 156
QMTF18-315	18	609.6 24.00	177.8 7.00	1066.8 42.00	31.8 1.25	366.8 14.44	152.4 6.00	36.6 1.44	20 %	44.5 1.75	1130.3 44.50	75.2 2.96	41.4 1.63	2-4 ACME	190.5 7.50	63.5 2.50	265.2 10.44	4	101.2 223
QMTF24-207	24	726.4 28.60	111.3 4.38	1028.7 40.50	25.4 1.00	233.4 9.19	101.6 4.00	28.7 1.13	20 %	-	1079.5 42.50	54.1 2.13	44.5 1.75	1.25-5 ACME	115.8 4.56	-	166.6 6.56	2	41.3 91
QMTF24-215	24	698.5 27.50	129.3 5.09	1079.5 42.50	25.4 1.00	271.5 10.69	127.0 5.00	24.6 0.97	16 %	38.1 1.50	1130.3 44.50	60.5 2.38	12.7 0.50	1.5-4 ACME	165.1 6.50	50.8 2.00	215.9 8.50	4	64.0 141
QMTF24-307	24	698.5 27.50	143.0 5.63	1117.6 44.00	28.7 1.13	295.4 11.63	127.0 5.00	26.2 1.03	20 %	38.1 1.50	1174.8 46.25	65.5 2.58	25.4 1.00	1.75-4 ACME	185.7 7.31	50.8 2.00	233.4 9.19	4	81.2 179
QMTF24-315	24	762.0 30.00	177.8 7.00	1219.2 48.00	31.8 1.25	367.5 14.47	152.4 6.00	36.6 1.44	20 %	44.5 1.75	1282.7 50.50	75.2 2.96	41.4 1.63	2-4 ACME	190.5 7.50	63.5 2.50	265.2 10.44	4	112.9 249

Frame only. Bearing unit must be ordered separately. See pages 116 (V-Lock), 143-146 (CL) and 172-173 (EC) of the Timken mounted solid block spherical roller bearing Catalog (No. 10785) or the Timken Type E Mounted Bearing Catalog (No. 10591) for information on take-up bearing units.

NOTE: All take-up frames come with Acme threaded rod.

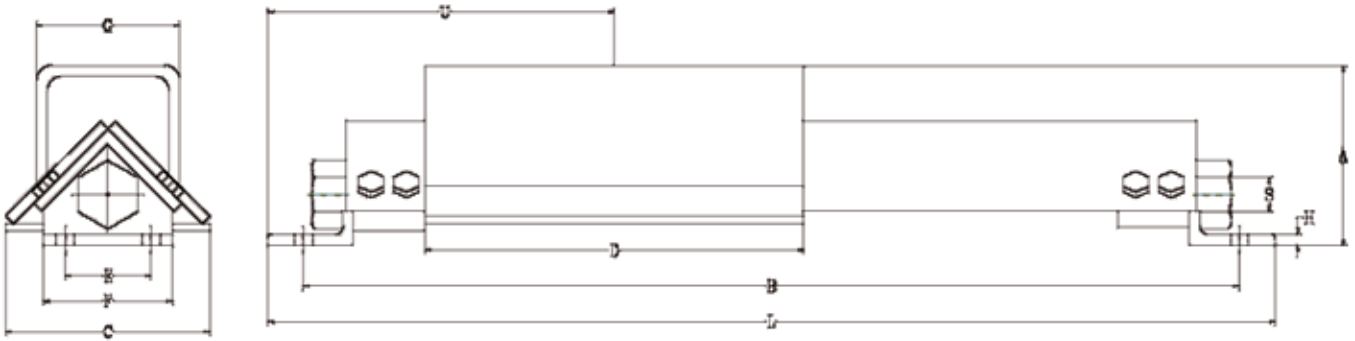
Installation Note: Ensure that the guide rails are parallel to each other to prevent binding / preloading of the bearings. When adjusting the take-up frames, ensure that both frames are tightened simultaneously to prevent misalignment from one frame to the other.

HEAVY DUTY TAKE-UP FRAMES - THD



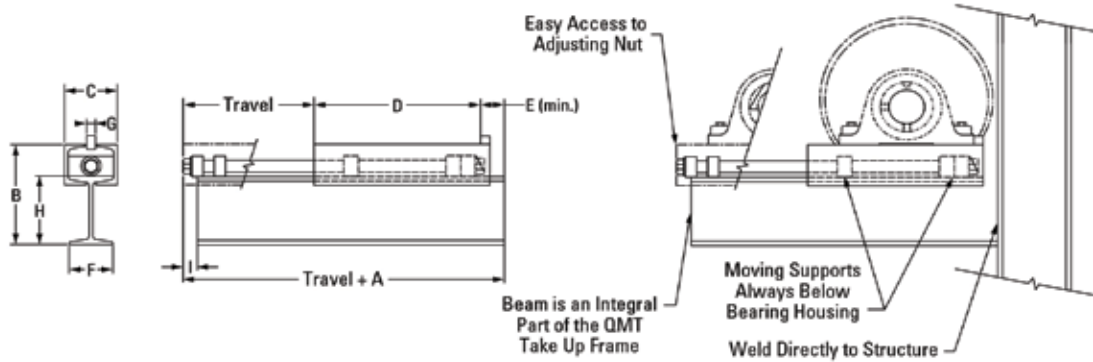
Frame Part No.	Travel	A	B	C	D	E	F	G	H	J	L	S	U	Wt.
	mm in.	mm in.	mm in.	mm in.	mm in.	mm in.	mm in.	mm in.	mm in.	mm in.	mm in.	mm in.	mm in.	Kg lbs
THD200 X 12	12	133.4 5.25	736.6 29.00	127.0 5.00	279.4 11.00	63.5 2.50	127.0 5.00	101.6 4.00	6.4 0.25	M16 5/8	769.9 30.31	1-5 ACME	247.7 9.75	21.8 48.0
THD200 X 18	18		889.0 35.00								896.9 35.31			23.6 52.0
THD200 X 24	24		1041.4 41.00								1074.7 42.31			25.4 56.0
THD200 X 36	36		1346.2 53.00								1379.5 54.31			29.0 64.0
THD208 X 12	12	158.8 6.25	831.9 32.75	139.7 5.50	336.6 13.25	76.2 3.00	139.7 5.50	127.0 5.00	9.5 0.38	M16 5/8	895.4 35.25	1-5 ACME	276.2 10.88	37.6 83.0
THD208 X 18	18		984.3 38.75								1073.2 41.25			40.4 89.0
THD208 X 24	24		1136.7 44.75								1200.2 47.25			43.0 95.0
THD208 X 36	36		1441.5 56.75								1505.0 59.25			48.5 107.0
THD300 X 12	12	177.8 7.00	901.7 35.50	165.1 6.50	362.0 14.25	76.2 3.00	165.1 6.50	152.4 6.00	12.7 0.50	M20 ¾	971.6 38.25	1.25-5 ACME	298.5 11.75	62.1 137.0
THD300 X 18	18		1054.1 41.50								1124.0 44.25			66.7 147.0
THD300 X 24	24		1206.5 47.50								1276.4 50.25			71.2 157.0
THD300 X 36	36		1511.3 59.50								1581.2 62.25			79.8 176.0
THD308 X 12	12	177.8 7.00	946.2 37.25	165.1 6.50	406.4 16.00	76.2 3.00	165.1 6.50	152.4 6.00	12.7 0.50	M20 ¾	1016.0 40.00	1.25-5 ACME	320.7 12.63	66.7 147.0
THD308 X 18	18		1098.6 43.25								1168.4 46.00			71.2 157.0
THD308 X 24	24		1251.0 49.25								1320.8 52.00			75.7 167.0
THD308 X 36	36		1555.8 61.25								1625.6 64.00			84.8 187.0
THD400 X 12	12	177.8 7.00	1047.8 41.25	165.1 6.50	508.0 20.00	76.2 3.00	165.1 6.50	177.8 7.00	12.7 0.50	M20 ¾	1117.6 44.00	1.25-5 ACME	396.9 15.63	79.8 176.0
THD400 X 18	18		1200.2 47.25								1270.0 50.00			84.4 186.0
THD400 X 24	24		1352.6 53.25								1422.4 56.00			88.9 196.0
THD400 X 36	36		1682.8 66.25								1727.2 68.00			98.0 216.0

HEAVY DUTY TAKE-UP FRAMES - THD



Frame Part No.	Travel	A	B	C	D	E	F	G	H	J	L	S	U	Wt.
	mm in.	mm in.	mm in.	mm in.	mm in.	mm in.	mm in.	mm in.	mm in.	mm in.	mm in.	mm in.	mm in.	Kg lbs
THD500 X 12	12	196.9 7.75	1193.8 47.00	177.8 7.00	596.9 23.50	101.6 4.00	177.8 7.00	215.9 8.50	12.7 0.50	M24 7/8	1257.3 49.50	1.5-4 ACME	419.1 16.50	137.9 304.0
THD500 X 18	18		1346.2 53.00								1409.7 55.50			146.6 321.0
THD500 X 24	24		1498.6 59.00								1562.1 61.50			152.9 337.0
THD500 X 36	36		1803.4 71.00								1866.9 73.50			168.3 371.0
THD600 X 12	12	260.4 10.25	1378.0 54.25	254.0 10.00	654.1 25.75	152.4 6.00	254.0 10.00	254.0 10.00	19.1 0.75	M24 1	1466.9 57.75	2-4 ACME	525.1 20.68	227.7 502.0
THD600 X 18	18		1530.4 60.25								1619.3 63.75			237.7 524.0
THD600 X 24	24		1682.8 66.25								1771.7 69.75			247.7 546.0
THD600 X 36	36		1987.6 78.25								2076.5 81.75			267.6 590.0
THD800 X 12	12	323.9 12.75	1546.2 60.88	304.8 12.00	914.4 36.00	152.4 6.00	304.8 12.00	304.8 12.00	19.1 0.75	M30 1-¼	1800.2 70.88	2.5-3 ACME	539.8 21.25	362.4 799.0
THD800 X 18	18		1698.6 66.88								1952.6 76.88			372.9 822.0
THD800 X 24	24		1851.0 72.88								2105.0 82.88			382.8 844.0
THD800 X 36	36		2155.8 84.88								2409.8 94.88			403.2 889.0
THD1000 X 12	12	393.7 15.50	1689.1 66.50	355.6 14.00	1016.0 40.00	152.4 6.00	355.6 14.00	355.6 14.00	19.1 0.75	M20 1-½	1943.1 76.50	3-2 ACME	590.6 23.25	540.7 1192.0
THD1000 X 18	18		1841.5 72.50								2095.5 82.50			559.3 1233.0
THD1000 X 24	24		1993.9 78.50								2247.9 88.50			577.9 1274.0
THD1000 X 36	36		2298.7 90.50								2552.7 100.50			615.5 1357.0

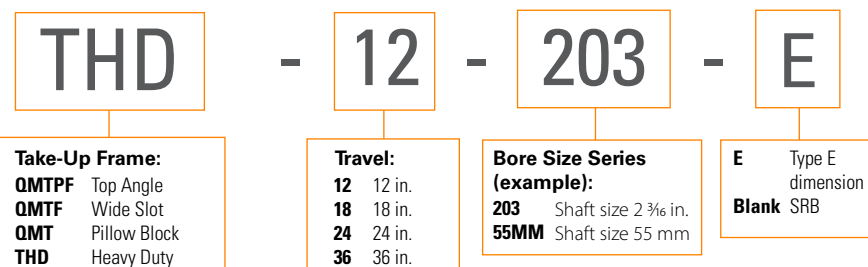
PILLOW BLOCK TAKE-UP FRAMES - QMT



Frame Part No.	Bearing Size	Travel	A	B	C	D	E	F	G	H	I	Wt.
			mm in.	mm in.	mm in.	mm in.	mm in.	mm in.	mm in.	mm in.	mm in.	mm in.
QMT1 X 9	1 7/16 in. – 2 15/16 in.	9	330.2	187.3	92.1	289.1	41.4	76.2	20	127.0	25.4	11.8
			13.0	7.375	3.625	11.38	1.63	3.00	3/4	5.0	1.0	26
QMT1 X 12	1 7/16 in. – 2 15/16 in.	12	330.2	187.3	92.1	289.1	41.4	76.2	20	127.0	25.4	13.6
			13.0	7.375	3.625	11.38	1.63	3.00	3/4	5.0	1.0	30
QMT1 X 18	1 7/16 in. – 2 15/16 in.	18	330.2	187.3	92.1	289.1	41.4	76.2	20	127.0	25.4	16.3
			13.0	7.375	3.625	11.38	1.63	3.00	3/4	5.0	1.0	36
QMT1 X 24	1 7/16 in. – 2 15/16 in.	24	330.2	187.3	92.1	289.1	41.4	76.2	20	127.0	25.4	19.1
			13.0	7.375	3.625	11.38	1.63	3.00	3/4	5.0	1.0	42
QMT2 X 18	2 15/16 in. – 4 7/8 in.	18	482.6	311.2	125.4	431.8	50.8	106.4	24	203.2	38.1	33.6
			19.0	12.25	4.938	17.00	2.00	4.19	1	8.0	1.5	74
QMT2 X 24	2 15/16 in. – 4 7/8 in.	24	482.6	311.2	125.4	431.8	50.8	106.4	24	203.2	38.1	40.8
			19.0	12.25	4.938	17.00	2.00	4.19	1	8.0	1.5	90
QMT2 X 36	2 15/16 in. – 4 7/8 in.	36	482.6	311.2	125.4	431.8	50.8	106.4	24	203.2	38.1	43.6
			19.0	12.25	4.938	17.00	2.00	4.19	1	8.0	1.5	96

1. Frame only. Bearing unit must be ordered separately.
2. NOTE: All take-up frames come with Acme threaded rod.
3. Designed for 2-bolt pillowblock.
4. I-beam is steel. Customer to define welding specifications.

TIMKEN® TAKE-UP FRAME NOMENCLATURE



The Timken team applies their know-how to improve the reliability and performance of machinery in diverse markets worldwide. The company designs, makes and markets bearings, gear drives, automated lubrication systems, belts, brakes, clutches, chain, couplings, linear motion products and related industrial motion rebuild and repair services.

Stronger. By Design.

www.timken.com