



Food & Beverage
PRODUCTS + SERVICES GUIDE

TIMKEN

Breadth. Safety. Savings.

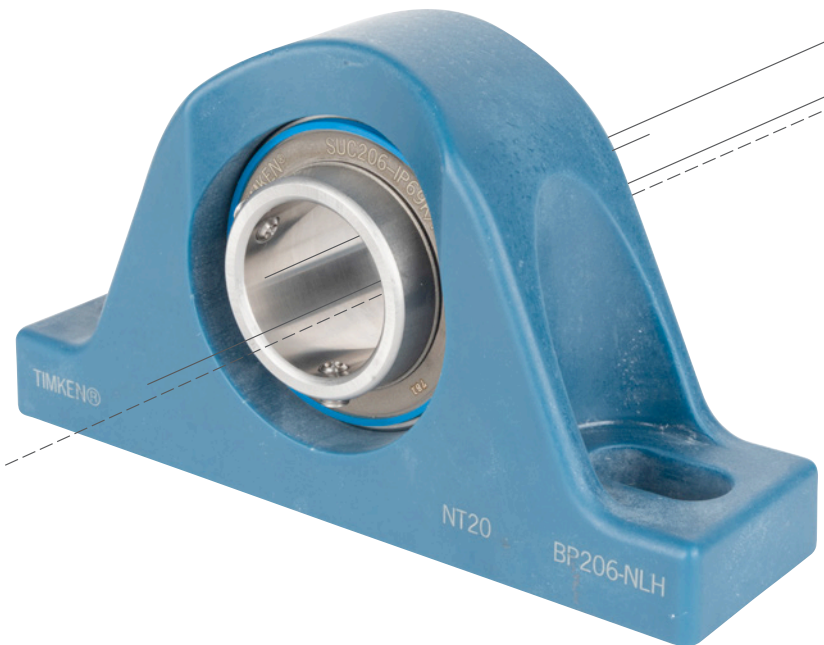
Safe, efficient manufacturing. It's vital to the health of the products you produce – and the viability of your business.

And while your operations must meet demanding safety regulations, they also need to operate profitably.

You need equipment tough enough to handle chemical wash-downs, high temperatures, fast throughput and other challenges they endure day in and day out.

Work with Timken to overcome your toughest challenges.

Together, we are **stronger, by design.**



For more information, visit us at www.timken.com.



The Timken Company

- » Established in 1899 by Henry Timken, who patented the tapered roller bearing
- » Headquartered in Canton, Ohio, USA
- » Listed on the New York Stock Exchange since 1922 (TKR)
- » Annual sales of \$4.8 billion (2023)
- » 19.000+ associates worldwide
- » Global manufacturing and logistics network

Serving Europe and Beyond

Headquartered in Colmar, France, the European operations of The Timken Company serve global bearing and power transmission markets.

An expansive distribution centre in Strasbourg, France supports customers around the clock. Eighteen European manufacturing plants deliver into an efficient global supply chain.

A further 200 technology, manufacturing, sales and distribution facilities situated around the world put Timken expertise within reach of global European customers.

Engineering support and advice is also available. Highly skilled teams are ready to solve challenges and help meet your needs.

ENGINEERED BEARINGS

BALL AND ROLLER BEARINGS

BALL BEARINGS



- » Deep groove and angular contact ball bearings tolerate relatively high-speed operation under light radial load conditions
- » Designed to accommodate both axial and radial loads



CYLINDRICAL ROLLER BEARINGS



- » Accommodate thermal expansion axial displacement with minimized drag over a wide range of speeds
- » Available with steel or brass cages and in full complement designs
- » EMA high-performance series features brass land-riding cages that help decrease operating temperatures



SPHERICAL ROLLER BEARINGS



- » Manage misalignment and shaft deflections under heavy loads
- » Designed to deliver the highest load ratings in the industry
- » Run at consistently lower temperatures than same-size competitive bearings
- » Available with hardened steel or brass cages for extra strength



TAPERED ROLLER BEARINGS



- » Optimize performance with the power density of tapered roller bearings that manage both radial and thrust loads
- » Broadest range of inch and metric sizes in the industry
- » Customized geometries and engineered surfaces can further enhance performance



CORROSION RESISTANT RADIAL BEARING SOLUTIONS

CORROSION-RESISTANT DEEP GROOVE BALL BEARINGS



- » 100% stainless steel bearings designed for food & beverage applications
- » NSF H1-registered food-safe grease for shielded and sealed bearings
- » Available with FDA/EC compliant optically detectable blue seals



SOLID LUBE



- » Never requires re-lubrication and consistently delivers the right amount of FDA-approved lubrication
- » Resists contamination and withstands harsh applications and wash downs
- » Options for high temperature applications such as ovens and fryers



RADIAL POLY-ROUND



- » Dimensionally interchangeable with 6000 and 6200 series deep groove ball bearings
- » Eliminate all rolling elements and avoid the risk of damaged bearing components falling into food products
- » Corrosion-resistant materials and a greaseless design are unaffected by washdowns
- » Feature FDA/EC/USDA compliant, high-temperature resistant, optically detectable blue polymer



BEARING HOUSED UNITS

BALL AND ROLLER BEARING HOUSED UNITS

BALL BEARING HOUSED UNITS



- » Help protect bearings from moisture and contamination with a wide range of sealing options for demanding environments
- » The Fafnir® range is designed to both North American and ISO standards
- » The U-Series is interchangeable with the popular JIS standard



SPHERICAL ROLLER BEARING SOLID-BLOCK HOUSED UNITS



- » Protect spherical roller bearings with cast-steel housings that handle severe shock loads and vibration
- » Rapid and easy mounting with a variety of shaft locking options
- » Multiple sealing options protect against contaminants in harsh environments



TYPE E TAPERED ROLLER BEARING HOUSED UNITS



- » Seal provides industry-leading protection against contamination
- » Highest dynamic load ratings in the industry improve bearing life and performance
- » ESA self-aligning version allows for static misalignment on installation



SNT/SAF PLUMMER BLOCK HOUSED UNITS



- » Protect high-performance spherical roller bearings from harsh environments with customizable design using interchangeable components
- » Keep grease in and contamination out with a variety of sealing options
- » Available in both fixed and expansion type configurations



SPLIT CYLINDRICAL ROLLER BEARING HOUSED UNITS



- » Ideal for trapped applications where bearings are easier to install, maintain and replace than when using plummer or solid block housings
- » Available in both fixed and expansion type configurations



CORROSION RESISTANT SOLUTIONS - BEARING INSERTS

STAINLESS-STEEL BALL BEARING INSERTS



- » Available with food-grade grease or food-grade solid lube
- » Stainless steel inserts with stainless steel cage are metal detectable and corrosion resistant



IP69K SEALED STAINLESS-STEEL BALL BEARING INSERTS



- » Protect against water and dust using IP69K-rated bearings with no need for an end cover
- » Stainless components are fully metal detectable and corrosion resistant
- » FDA/EC compliant optically detectable blue sealing



SOLID LUBE



- » Never requires re-lubrication and consistently delivers the right amount of FDA-approved lubrication
- » Resists contamination and withstands harsh applications and wash downs
- » Options for high temperature applications such as ovens and fryers up to 340°C



POLY-ROUND BEARING INSERTS



- » Improve food safety using high-performance polymer non-corrosive bearing design
- » Lubrication free design better withstands equipment wash-downs
- » For temperatures from -40 to 248 °C
- » Available in FDA/EC/USDA compliant optically detectable blue



CORROSION RESISTANT SOLUTIONS - HOUSED UNITS

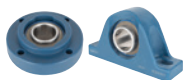
WHITE POLYMER HOUSING WITH STAINLESS STEEL BALL BEARING INSERT



- » High corrosion resistance
- » Interchangeable with standard industrial solution
- » Good value option for applications where there is no direct contact with food
- » Choose pillow block, 2-bolt, 3-bolt or 4-bolt flange



BLUE HYGIENIC POLYMER HOUSING WITH IP69K BALL BEARING INSERT



- » Stainless steel bearing insert with IP69K compliant seals
- » High resistance to corrosion and contamination
- » Maintenance- and lubrication-free
- » Hygienic design
- » Choose pillow block, 2-bolt, 3-bolt, 4-bolt flange, take-up units, tapped base, or piloted flange



STAINLESS STEEL HOUSING WITH IP69K BALL BEARING INSERT



- » Stainless steel bearing insert with IP69K compliant seals
- » Corrosion resistant
- » High contamination resistance
- » Maintenance- and lubrication-free
- » FDA/EC food contact safe
- » Choose pillow block, 2-bolt, 3-bolt, 4-bolt flange, take-up units, or tapped base



BLUE HYGIENIC POLYMER HOUSING WITH NA POLY-ROUND INSERT



- » Very high corrosion resistance
- » Maintenance- and lubrication-free
- » Hygienic design
- » Choose pillow block, 2-bolt, 3-bolt, 4-bolt flange, take-up units, tapped base, or piloted flange



STAINLESS STEEL HOUSING WITH FE POLY-ROUND INSERT



- » High corrosion resistance
- » Maintenance- and lubrication-free
- » FDA/EC food contact safe
- » High-temperature (-20°C to 250°C)
- » Choose pillow block, 2-bolt, 3-bolt, 4-bolt flange, take-up units, or tapped base



HYGIENIC STAINLESS STEEL HOUSING



- » Available with IP69K sealed ball bearing or Poly-Round inserts
- » High corrosion resistance
- » Maintenance- and lubrication-free
- » FDA/EC food contact safe
- » High-temperature (-20°C to 250°C)
- » Hygienic design
- » Choose pillow block, 2-bolt, 3-bolt, 4-bolt flange, take-up units, or tapped base



QUIKLEAN® FLANGED UNITS



- » 1-piece, cast stainless or polymer construction
- » Integrated stand-off allows access for cleaning on all sides
- » Smoother surfaces, fewer crevices, easy to clean
- » Reduces downtime from sanitary violations



SPHERICAL ROLLER BEARING CORROSION RESISTANT SOLID BLOCK HOUSED UNITS



- » Strong, non-corrosive solution
- » Unaffected by washdown and stand up to process moisture and chemical sanitation
- » Available with FDA-compliant coating for corrosion resistance and food safety



INDUSTRIAL MOTION

<p>ROLLER CHAIN</p> 	<ul style="list-style-type: none"> » Diamond ISO/British Standard and ANSI Standard chain is made from alloy steels to meet exacting standards of impact tensile and fatigue strength to excel in tough, high-performance applications » Increase strength, durability, and wear resistance with heat treated steel » Reduce initial run-in time and extend wear life with dynamically preloaded chains 	
<p>BELTS</p> 	<ul style="list-style-type: none"> » Get gripping performance in of demanding applications with purpose-designed belts » Comprehensive line of premium-quality, heavy-duty v-belts and synchronous belts 	
<p>QUICK FLEX® COUPLINGS</p> 	<ul style="list-style-type: none"> » Easy to install and requiring no lubrication, they handle tough challenges with little or no maintenance for lower ownership costs » Designed for a wide range of torques and speeds » Replace coupling insert without moving hubs – maintenance takes minutes instead of hours 	
<p>STAINLESS STEEL JAW COUPLINGS</p> 	<ul style="list-style-type: none"> » Corrosion-resistant hubs with finished bores deliver reliable, lubrication-free service for light-, medium-, and heavy-duty applications » Four different insert materials: NBR (Buna N), Urethane, Hytrel®, and bronze 	
<p>DRY BELT LUBRICATION SYSTEMS</p> 	<ul style="list-style-type: none"> » BEKA's dry belt lubrication system is specially designed for the food & beverage industry » An extremely fine film application of dry lubricant onto belts replaces soap and water solutions to significantly reduce water consumption, lower corrosion-related maintenance, avoid damage to packaging, and keep floors dry for better safety 	
<p>STAINLESS-STEEL GEARBOXES</p> 	<ul style="list-style-type: none"> » Help keep food preparation areas bacteria free with an easy-to-clean, stainless-steel housing » Lifetime food-grade lubrication, suited for temperatures from -30° to 93°C » Superior rigidity and torque density » NSF certified and IP69K rated for maximum protection against contaminants and leaks 	
<p>CYCLOIDAL GEARBOXES</p> 	<ul style="list-style-type: none"> » Improve performance for food processing applications with high-precision reduction gears with a unique main bearing design » Combine a small design envelope and low weight with high torsional and tilting stiffness » High performance food-based grease option 	
<p>LINEAR BEARING SYSTEMS</p> 	<ul style="list-style-type: none"> » Decrease wear and tear on critical components to extend uptime, reduce maintenance costs and improve safety » Resistant to extreme conditions with flexible assembly to meet a wide variety of specifications » Dual line parallel systems add value for applications requiring longer line lengths 	

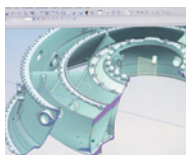
SERVICES

TECHNICAL CAPABILITIES



Whether it's an engineered surface, advanced seal or customized lubricant, our application engineers excel at identifying and overcoming unique challenges. With more than a century of knowledge and innovation, we continuously improve the reliability and efficiency of global industries.

ADVANCED BEARING ANALYSIS SYSTEM



Our application analysis software helps speed the concept-to-design process and reduces testing requirements. It analyses bearing systems, helps optimize design and development, and predicts potential damage. Timken customers can perform base design analytics with their own version of this powerful software.

ONLINE SERVICES



Enjoy the benefits of Timken customer service and a global logistics network. Distributors can check product availability, place orders and track order status online – 24/7! Engineers can easily access CAD drawings, product selection tools, bearing life calculators and dimensional tolerances.

TRAINING AND CERTIFICATION



Develop new skills. Improve know-how. Get deeper insight. Timken training solutions fit specific needs. Maintenance personnel learn to improve uptime and performance. Engineers get advice on choosing materials or components. Distributors discover better ways to serve customers. Timken provides both standard and customized on-site training as well as end-user maintenance seminars and bearing certification programs.

SERVICE ENGINEERING



Overcome challenges and find ways to prevent future problems. Our service engineers leverage data, testing and technical resources to offer on-site problem solving, life cycle calculations, interface design options, and bearing inspections and evaluations. They are driven to discover new paths to higher efficiency and productivity.

ROLLON®

 **DIAMOND DRIVES**

TIMKEN BELTS

Lovejoy®

 **Cone Drive**

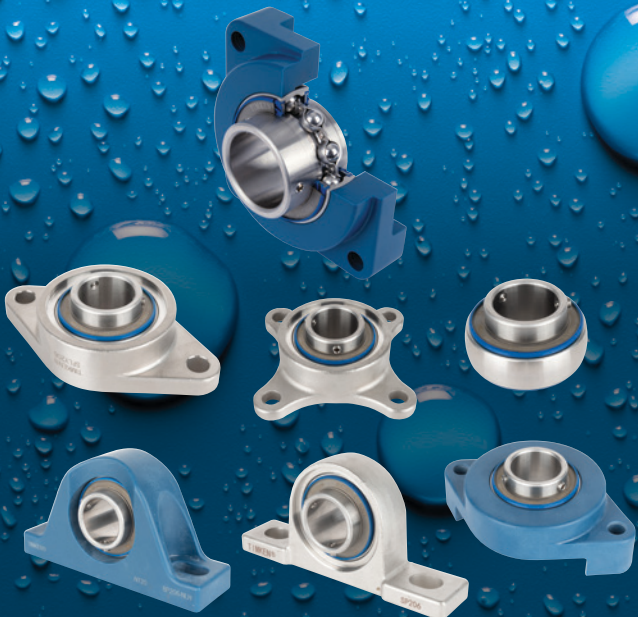
 **GROENEVELD-BEKA**
LUBRICATION SYSTEMS

 **SPINEA**

TIMKEN

TIMKEN IP69K HYGIENIC
BALL BEARING HOUSED UNITS

WINNER OF THE 2023 BEARING
SPECIALISTS ASSOCIATION
MANUFACTURER EXCELLENCE AWARD



Stronger. By Design.



TIMKEN

- » ENGINEERED BEARINGS
- » INDUSTRIAL MOTION
- » INDUSTRIAL SERVICES

WWW.TIMKEN.COM/Food

The Timken team applies their know-how to improve the reliability and performance of machinery in diverse markets worldwide. The company designs, makes and markets bearings, gear drives, automated lubrication systems, belts, brakes, clutches, chain, couplings, linear motion products and related industrial motion rebuild and repair services.

Stronger. By Design.

Order No. E11122-GB
Timken® is a registered trademark of The Timken Company.
© 2024 The Timken Company | Printed in Europe.